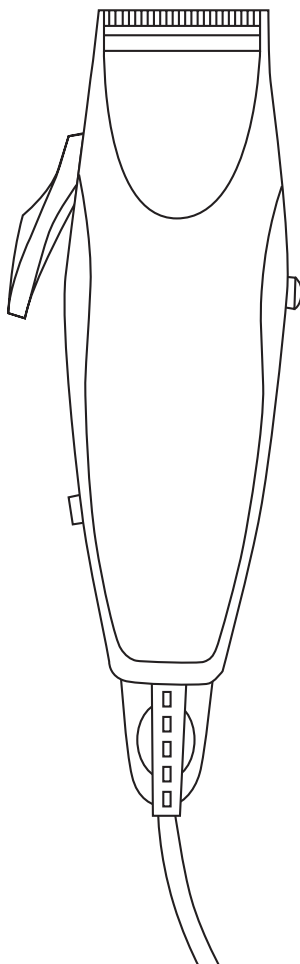
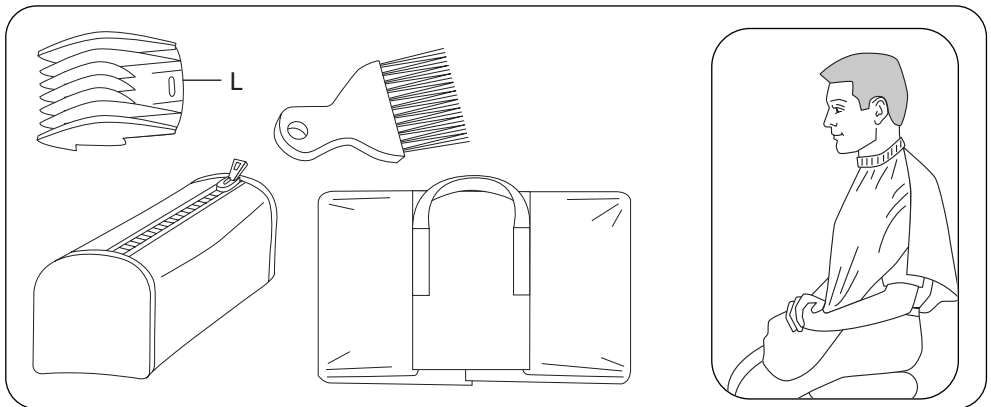
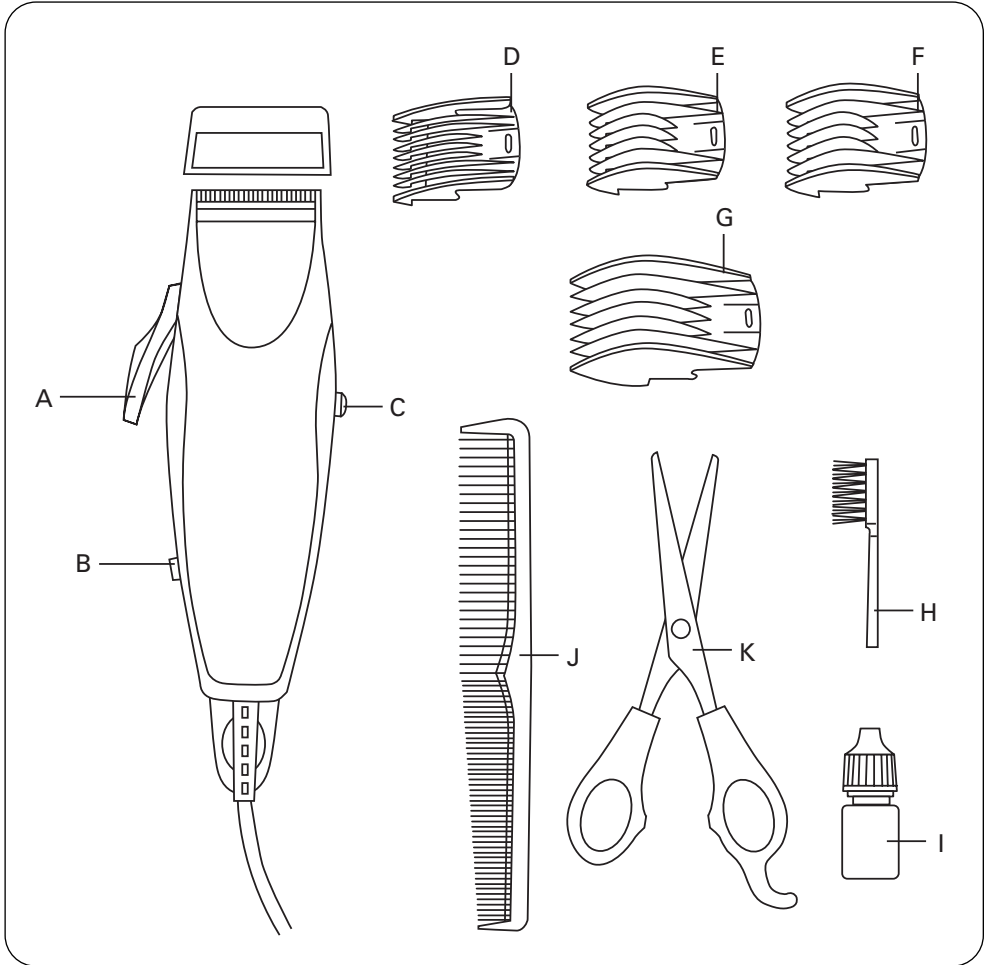


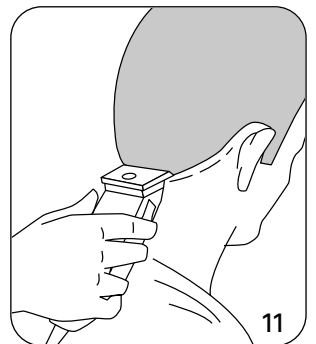
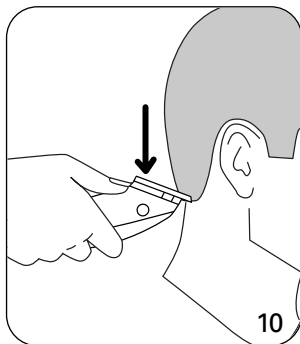
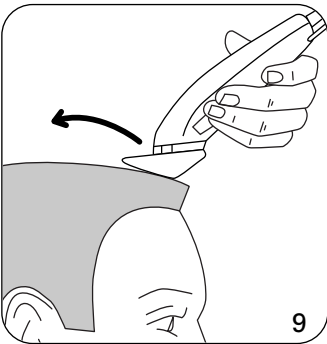
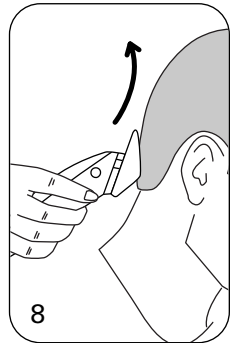
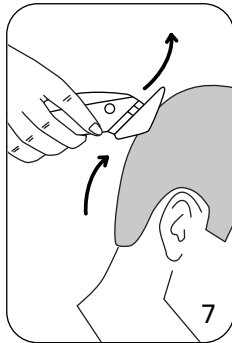
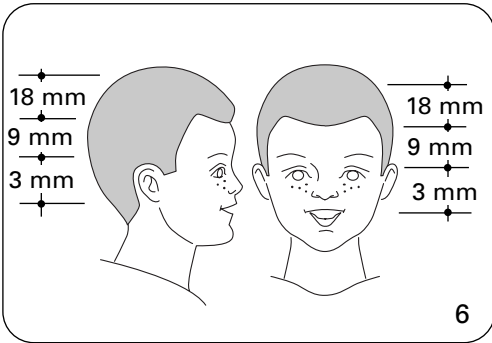
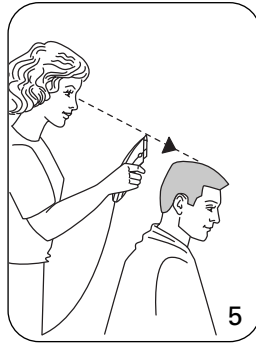
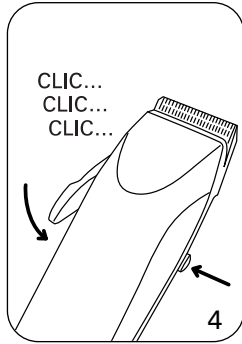
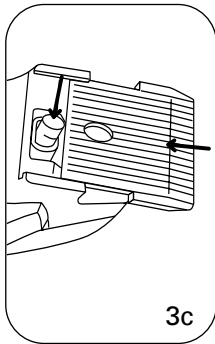
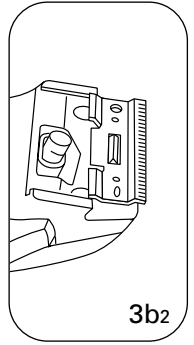
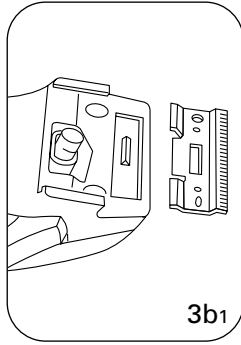
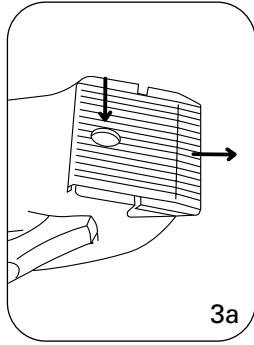
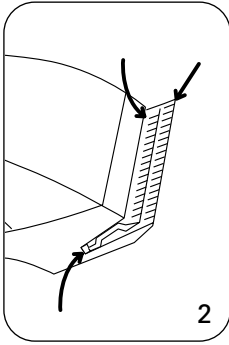
Rowenta

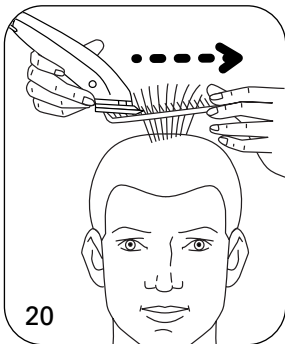
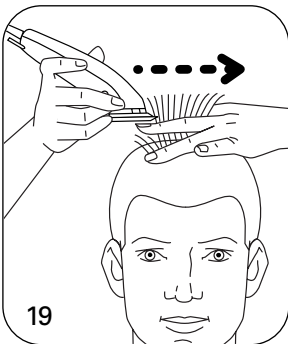
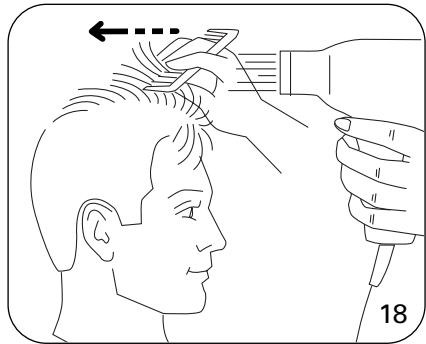
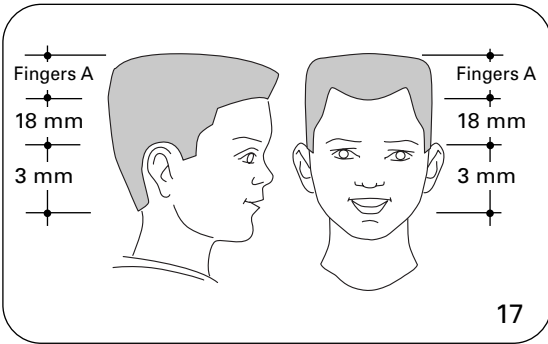
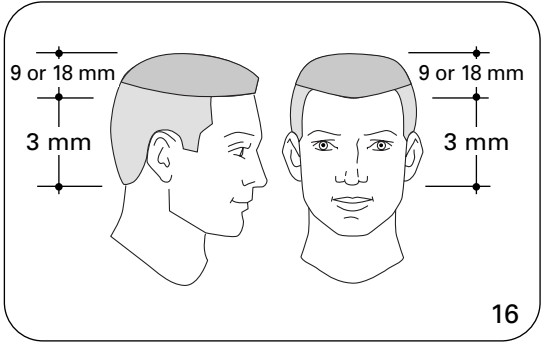
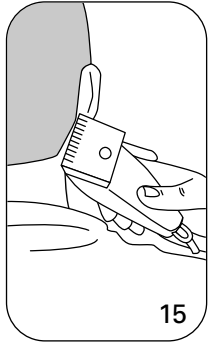
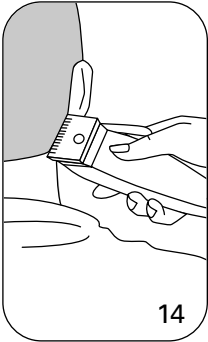
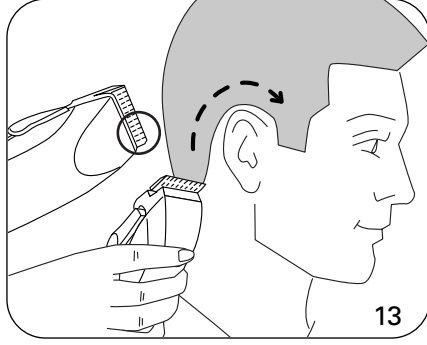
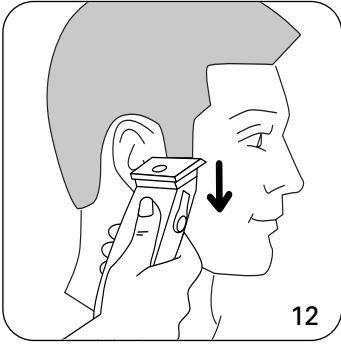
PERFECT LINE

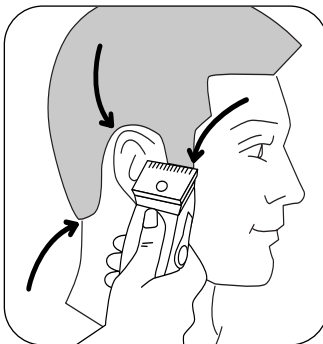
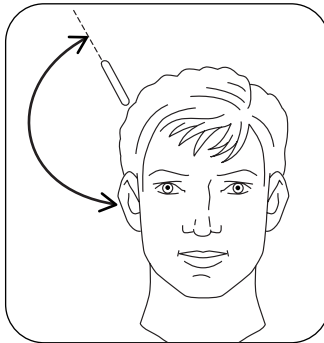
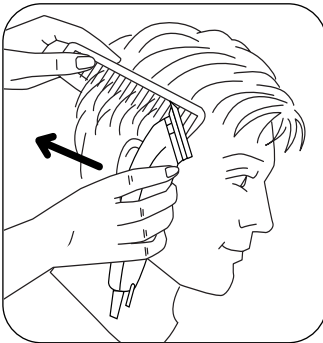
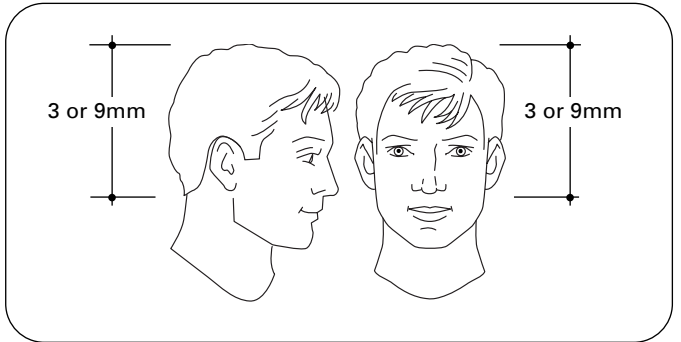
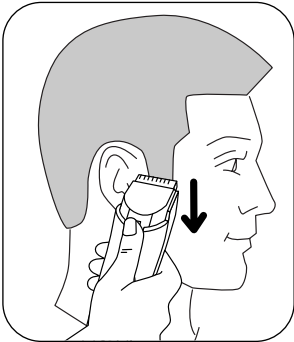
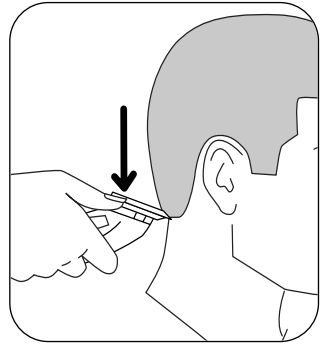
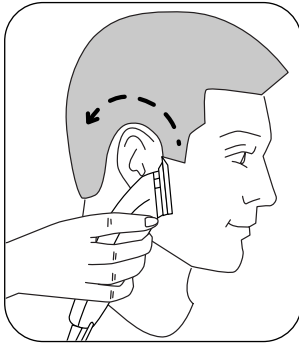
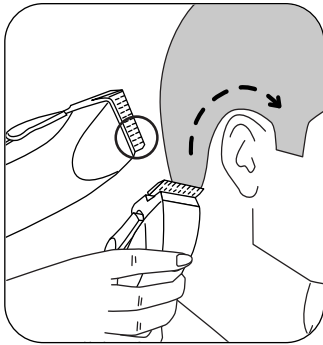


Gebrauchsanweisung
Instructions for use
Notice d'emploi
Istruzioni per l'uso
Modo de empleo
Modo de utilização
Käyttöohje
Инструкция по
использованию
Kullanma talimatı









With its careful design and precise adjustment of the cut height, this trimmer is a genuine professional-quality tool of genuine professional quality.



Please read these instructions before using this appliance, to avoid any danger through incorrect use.

1. DESCRIPTION OF THE HAIR TRIMMER AND ITS ACCESSORIES (Fig. 1)

- A. Cut height fine adjustment lever.
- B. On/off switch.
- C. Cut height fine adjustment lever lock/release switch.
- D + D'. Comb : very very short cut.
- E + E'. Comb : very short cut.
- F. Comb : short cut.
- G. Comb : fairly short cut.
- H. Cleaning brush.
- I. Bottle of lubricant, to be used every 2 or 3 cuts.
- J. Styling comb.
- K. Scissors.
- HC 141 mod. only :**
- L. Travel pouch.
- M. Shaving brush.
- N. Protective gown.

2. CUT HEIGHT LEVER FOR FINE ADJUSTMENT

Your hair trimmer is equipped with a cut height fine adjustment lever. Press the right-hand button downwards and choose the position required by pressing the lever (Fig. 4).

3. SERVICE VOLTAGE

Only plug the appliance into an a.c. power supply. It is designed exclusively for use with a 220-240 V supply.

4. GUARANTEE

Your appliance is guaranteed for one year, but incorrect connection to the power supply, use of accessories from another manufacturer or abnormal use of the appliance will render the guarantee null and void.

5. MAINTENANCE

You can clean the hair trimmer with a slightly damp cloth. The blades are removable, for cleaning (please see paragraph entitled "Changing the cutting head").

When refitting the blades, ensure that they are correctly aligned in order to avoid injury.

We recommend that the cutting head be cleaned after each use, using the cleaning brush.

6. LUBRICATION

Lubricate the blades every 2 or 3 times you use it, with the lubricant supplied, or, with sewing machine oil (Fig. 2).

- Before lubricating, unplug the appliance, and remove any hair trapped between the trimmer's teeth using the cleaning brush
- Operate the hair trimmer for a few seconds
- Clean the excess oil with a cloth.

7. CHANGING THE CUTTING HEAD

- After a long period of use, the cutting blade may become dull. The plate may lose a tooth if the appliance is dropped.

DISASSEMBLY / REASSEMBLY (FIG. 3a/3b/3c)

NB : spare parts are available from specialist outlets and from approved ROWENTA service centres.

8. SAFETY ADVICE

- Unplug the appliance before each maintenance (change of accessory, lubrication, change of the cutting head, etc.) and after use.
- Do not immerse the hair trimmer in water or splash it with water.
- Do not use the appliance near a sink or bath or with wet hands.
- Do not use an extension lead in the bathroom.





- Do not use the trimmer if you suffer from a skin infection.
- If the trimmer is used by several people, appropriate cleaning of the head is recommended.
- To avoid damaging the power lead, do not wrap it around the hair trimmer.
- Keep the power lead, the appliance and accessories away from any hot surfaces.
- This appliance is designed for domestic use only.
- Never use accessories which are not recommended by the manufacturer.
- When handling the power lead, ensure that it is completely untangled.
- Close supervision is necessary when the appliance is used on or in the presence of children.
- Never use the hair trimmer on animals.
- Never pull the power lead to unplug the appliance.
- If the power cable is damaged, it must be replaced by the manufacturer, its after-sales service or a person with similar qualifications to avoid any danger.
- If you have opted for a shaven head, beware of sunburn and sunstroke.
- To avoid injury, never use the hair trimmer if the blade is damaged or if a tooth is broken.
- If you notice that the hair trimmer or its accessories are damaged, do not turn it on. Contact an after sales service centre. Repairing an appliance by yourself may result in danger for the user.
- ROWENTA declines all responsibility in the event of damage to the appliance due to improper use or failure to comply with the instructions.
- **We recommend that you do not operate the hair trimmer on yourself.**
- **Do not use the trimmer non-stop for more than 10 minutes.**
- **Be careful when using the trimmer for the 1st time. Take your time, using slow and controlled movements.**

Cutting tips are provided for information only. ROWENTA cannot accept any responsibility if the result of the cut does not correspond to the user's expectations.

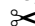
9. TIPS FOR A SUCCESSFUL HAIRCUT

- Use the hair trimmer on clean, dry hair
- Dry the hair in the direction of the hairstyle you wish to obtain
- Position the person whose hair you are going to cut in such a way as to be able to see the top of his/her head (Fig. 5)

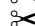
Before starting a cut, examine the hollows and bumps on the head, which are often located at the nape of the neck (if you place the trimmer directly against a bump, you will obtain a lighter area).

- At the beginning, only cut a small quantity of hair, until you are familiar with the length left by each comb.
- Never stop the trimmer in mid-stroke.
- Start with the comb with the highest number (i.e. the one which leaves the most hair) before using another comb.

Key :

 = easy cut

 = cut which requires some practice

 = difficult cut

10. FOR A SUCCESSFUL ROUND CREW CUT

BASIC METHOD

With this method, the cut follows the shape of the skull.

- **Combs necessary for this cut: 3 mm, 9 mm, 18 mm (fig. 6).**
- Do not forget to change the comb as you progress through the hair.

1st STAGE : THE CUT.

a) Nape.

- Brush the hair.
- Begin by cutting the hair at the nape upwards, using comb 18 mm.
- Hold the trimmer firmly against the hair, with the comb's teeth pointing slightly upwards (fig. 7).
- Slowly raise the hair trimmer towards the top and outside of the hair, cutting only a small amount of hair at a time (fig. 8).
- Once the hair at the nape has been evenly cut using comb 18 mm, replace the removable comb in order to obtain the required length and repeat the first 3 operations.
- Stop the cut at regular intervals, comb the hair and check the result.

b) Sides and top

- Repeat the above operations to cut the sides.
- Change the comb as you change areas (see fig. 6).
- For the top, use the same technique, cutting the hair from the forehead to the crown, against the "lie of the hair" (fig. 9). Then, level off to match the sides.

2nd STAGE : CONTOURS AND FINISH

a) Nape and sideburns

- Comb the hair.
- Take off the removable comb from the hair trimmer.
- Move the cutting height lever back to 'very short' position (lever released).
- Cut the hair from the edge of the cut, moving downwards, holding the trimmer upturned and right angles to the head. Use short strokes (figs. 10 and 11).
- Repeat these operations for the sideburns (fig. 12).

b) Around the ears.

- Comb thoroughly the hair around the edge of the ear; take off the removable comb.
- Hold the trimmer on the edge, but only use a corner of the trimmer, following slowly the required contour and following the direction of the cut (fig. 13).

Tips :

- **When using the hair trimmer without a removable comb, make sure that you use controlled, light movements.**
- **For the finishing strokes, ensure that the hair trimmer remains at right angles to the skin, in order to avoid injury (fig. 14 and 15).**

11. FOR A SUCCESSFUL AMERICAN-STYLE CUT ✂

A very short cut on the sides and the nape, and very short on the top.

- **Combs necessary for this cut : 3 mm, 9 mm or 18 mm (fig. 16).**
- Do not forget to change combs as you progress through the hair.

1st STAGE : THE CUT

- To cut the hair on the sides and the nape, see the "Round Crew cut" chapter. At the end, use 3 mm comb to obtain a shaven cut.
- For the top, at the locations indicated by the zone change lines (see fig. 16), use comb 9 or 18 mm, in order to keep the length longer. Cut the hair from front to back.

2nd STAGE : CONTOURS AND FINISH

- Consult the "Contours and finish" paragraph in the " Round Crew cut" section.

12. FOR A SUCCESSFUL COMB OR FINGER CUT (square crew cut) ✂✂

This cut provides a flat surface on the top of the head.

- **Combs necessary for this cut : 3, 18 mm + fingers (fig. 17)**
- Do not forget to change combs as you progress through the hair.

1st STAGE : THE CUT

- To obtain a successful square crew cut, preliminary drying is the most important factor (fig. 18).
- Dry the hair against the lie in order to raise the crew cut.
- Begin the cut on the sides and the nape, using the combs specified in fig. 17 (for the cut procedure, consult the chapter entitled "Round crew cut").
- To obtain a flat top, use the normal comb or, failing that, your fingers (fig. 19 and 20).
 - take off the removable comb from the hair trimmer,
 - using the styling comb (or your fingers), raise a small strand of hair (the hair must be in a vertical position in relation to the skull),
 - move the comb or your fingers along the strand until you obtain the required length,
 - use the hair trimmer to cut the hair sticking out of the comb or your fingers, using the latter as a support,
 - the height of the last strand cut is used as a guide for the subsequent strands,
 - continue in this way, strand by strand, moving gradually from the back to the top of the skull, and

then to the front.

- comb the hair regularly to remove the cut hair and check the condition of the cut,
- to obtain a perfect transitional area (A on fig. 17), between the top and side hair, slightly tilt the flat comb and cut the excess hair (fig. 21).

2nd STAGE : CONTOURS AND FINISH

- See the paragraph entitled "Contours and finish" in the "Round Crew cut" section.

13. FOR A SUCCESSFUL TRIM ✂✂✂

1st STAGE : THE CUT

To ensure a consistent and Professional result when cutting the excess hair. For this cut, work without a removable comb.

a) Around the ears (fig. 22 and 23)

- Comb the hair in the required style.
- Place the upturned hair trimmer between the sideburns and the ear and make sure that the blade angle is placed at the roots of the hair (only use the tip of the hair trimmer).
- Move the trimmer slowly above, around and behind the ears.

b) Nape (fig. 24)

- For the nape, hold the hair trimmer upturned, pressing lightly against the hair.
- Proceed as shown in the sketch below, moving downwards, in short strokes.

c) Sideburns (fig. 25)

- Move the trimmer downwards, holding it upturned, with the cut line at right angles to the head. Proceed in short strokes.

14. FOR A SUCCEWSSFUL "SHORT BACK AND SIDES" ✂

With this cut, on the sides and nape only, your hair is kept long on the top (fig. 26).

- **Combs necessary: 3 or 9 mm, according to the required length (fig. 26).**

1st STAGE : THE CUT

- Cut the hair on the nape of the neck and the sides (following the procedure described in the "Round Crew cut" paragraph), using the hair trimmer fitted with comb 3 or 9 mm (according to the required length), up to point A (see sketch).
- Starting from point A (located a few cm above the ear) (fig. 26), use a flat comb to obtain a perfectly clean line. Tilt the comb in relation to the skull (fig. 28) and cut the hair exceeding the comb, using the hair trimmer without its removable combs (use this comb as a guide) (fig. 27).
- Do not cut the hair on the top.

2nd STAGE : CONTOURS AND FINISH

- See the "Contours and finish" chapter in the "Round Crew cut" section (fig. 29).